

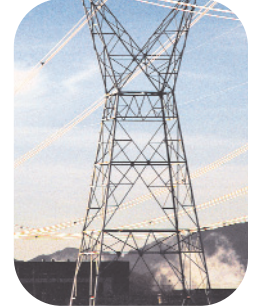
# Utility & Energy Coverage Solutions



Spotwave brings  
the outdoor signal  
inside – giving you  
clear voice call  
quality and high  
speed data rates

## Product Benefits

- Cost-effective targeted coverage - only where you need it
- Everything you need for rapid deployment in an out-of-the-box solution
- Easy to install - no special skills or equipment required
- Once installed it's maintenance free
- Field upgradeable Personality Module™ effectively future-proofs the system as network configurations change



## Wireless for Where you Work

More than ever, utility and energy companies are challenged to work more efficiently and as a result, organizations are turning to wireless communication as a way to ensure immediate contact between offices and field workers. Through the use of cell phones and other wireless devices, employees and contractors are able to generate real-time reports in the field. These devices make it possible to perform a one-stop utility and energy audit, and instantly produce customer need assessments and evaluations.

Utility and energy companies recognize the tremendous advantages of wireless communication and the ability for this type of technology to reduce overall transaction costs. The business benefits of wireless technology in the energy and utility field are clear, but often the indoor wireless coverage required to use the technology is not.

That's where Spotwave comes in.

## The Issue

Many public utility officials work in offices located in densely populated urban centers, or in buildings made of materials which block cellular signals. Concrete and tinted glass can create additional wireless coverage gaps, rendering your wireless investment ineffective.

For most public utility organizations, providing cross-building coverage can be a simple and affordable investment. Most office locations only need to improve coverage in targeted areas so key officials are able to communicate with field representatives.

## Spotwave's Solution

SpotCell® indoor coverage systems from Spotwave seamlessly bring the outdoor signal inside - ensuring your wireless devices work reliably indoors where they are being used most. Our solution is ideal for organizations looking to quickly and cost-effectively enhance indoor wireless connectivity in spaces ranging from 5,000 to 500,000 sq ft.

## Benefits to your Organization

- Maximize your investment in wireless technology by ensuring devices can be used indoors
- Immediate access to field reports and energy audits, benefiting both utility field workers and officers
- Expedite response time of utility workers in emergency situations
- Can decrease overall transaction costs of routine procedures including energy audits
- Reach more customers and distribute energy efficient measures in an equitable and cost-effective manner
- Give employees the flexibility to communicate with their own operations as well as with other groups internally

Toll-Free in North America  
1-866-704-9750

Telephone  
1-613-591-1662

Email  
info@spotwave.com

Web Site  
www.spotwave.com

## Carrier Grade Technology

Our products are carrier-specific to ensure the best signal integrity, supporting CDMA and GSM technologies and all carriers operating in North America. Once installed, our SpotCell® systems require no maintenance or adjustments and are guaranteed to maintain signal integrity under a broad range of conditions.

## The Carrier-Approved Difference

Spotwave Wireless has the only out-of-box solution certified by carriers across the continent. Carriers have invested billions of dollars for their wireless spectrum - their most valuable asset. They are also legally responsible for ensuring they do not interfere with another carrier's spectrum. This means you're prohibited from deploying or using any product which could interfere with your carrier's, or another carrier's network. Even FCC and other regulatory approvals do not guarantee a product is compatible with a carrier's network, nor do they mean a product is certified and approved by a carrier.

Maintaining carrier network integrity is not a concern if you deploy a SpotCell® indoor coverage system. Spotwave has worked closely with carriers to determine what impacts their networks, and goes well beyond minimum requirements for coverage enhancement - ensuring products will never interfere with a carrier network. This peace of mind is a critical consideration for your organization.

## Our Utility and Energy Deployments

Our customers are organizations trying to leverage wireless technology and improve communication quickly and affordably. Whether the coverage problem is in a board room, office, or boiler room, we provide our public utility customers with carrier-approved seamless coverage where they need it, when they need it. And our customers agree that our approach to seamless coverage is second to none.

- Alberta Enviro Fuels
- Albion Sands Energy
- Alliant Energy
- Clark Public Utilities
- Consumers Energy
- Coral Energy
- Eau Claire Energy Co-op
- Husky Energy
- Teco Energy
- Trans Alta
- Weatherford